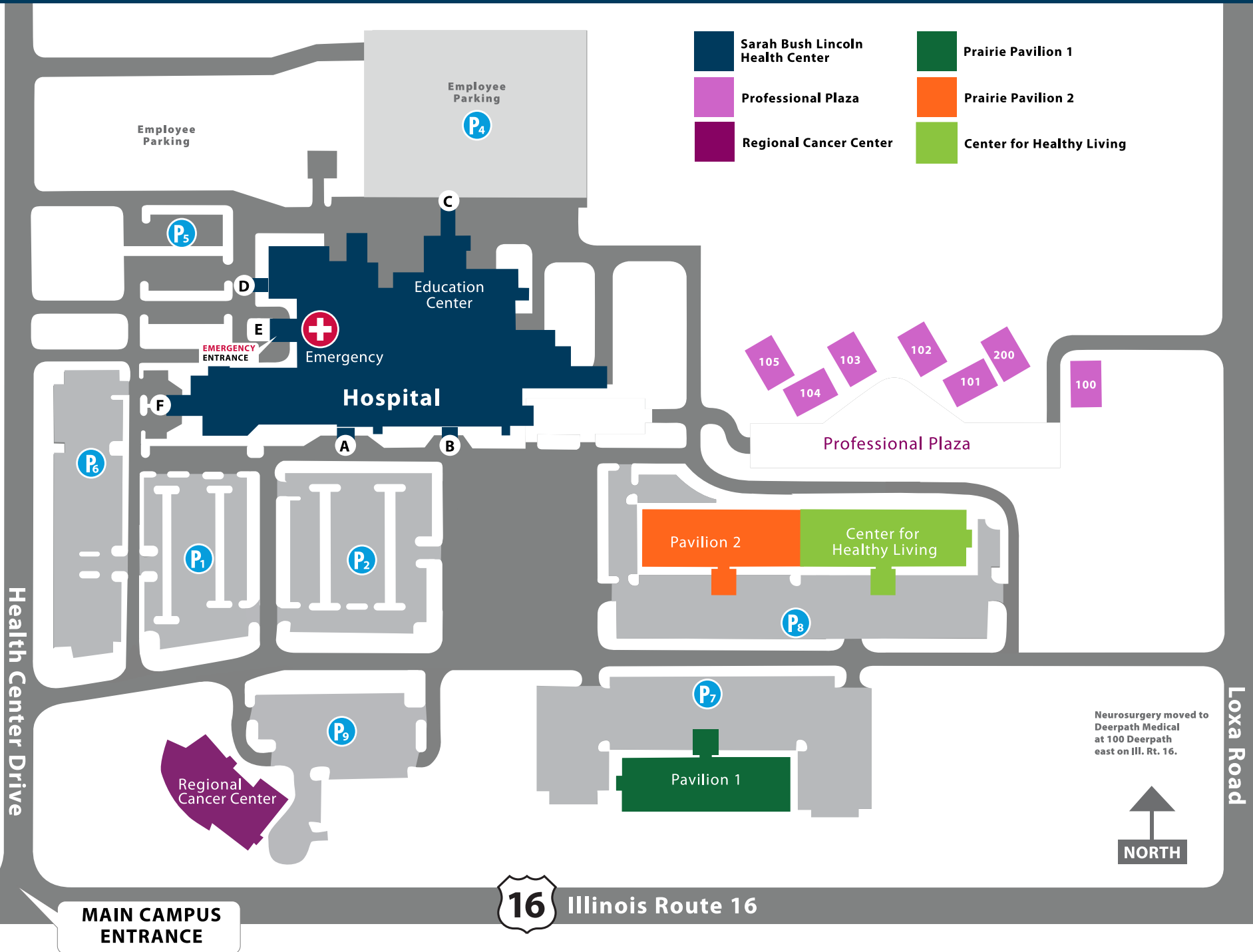


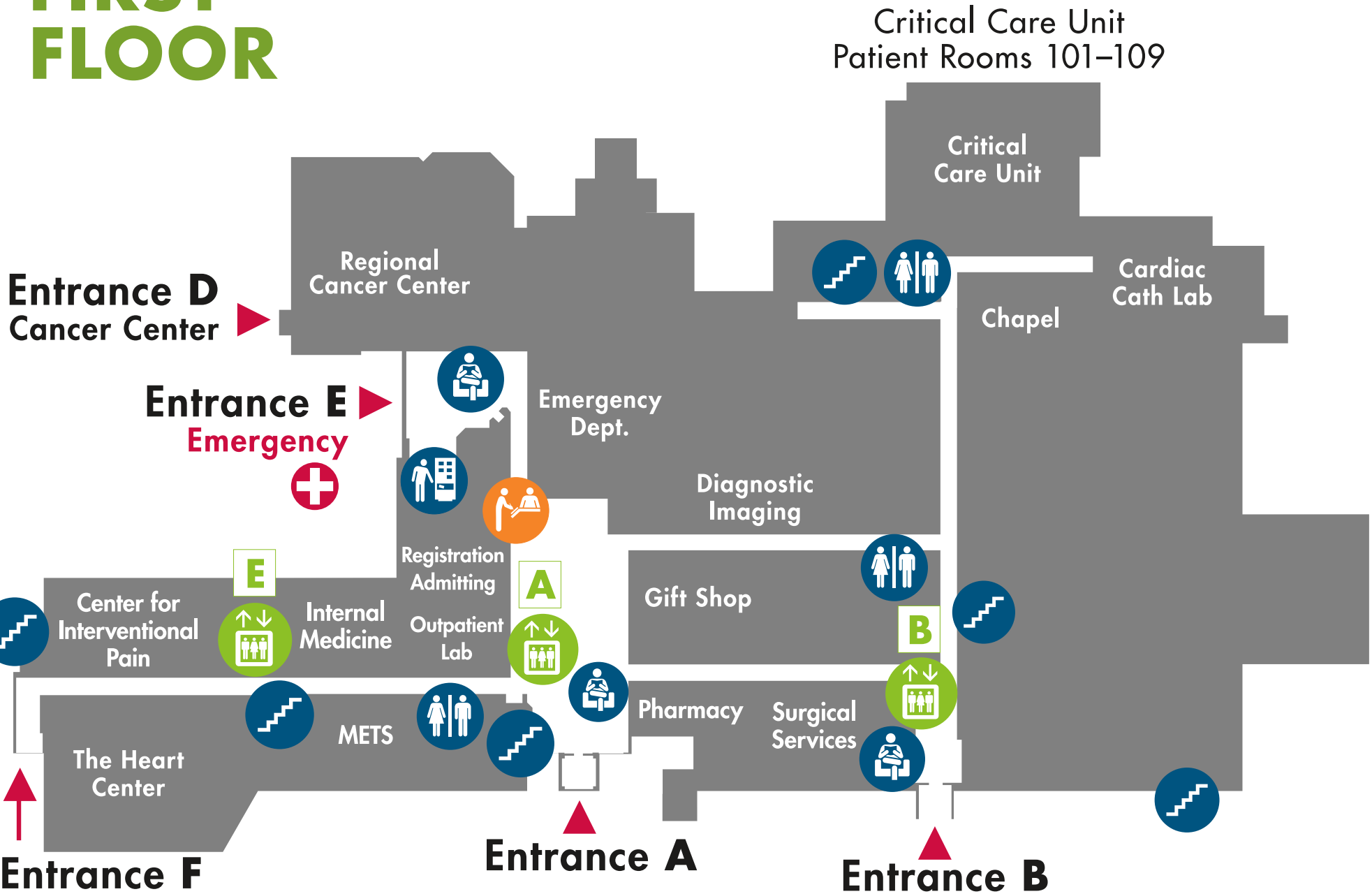


Sarah Bush Lincoln Health Center is a **tobacco-free** campus.

Thank you for your cooperation.



HOSPITAL FIRST FLOOR



HOSPITAL GROUND FLOOR



Entrance C
Education Center

Lumpkin Family
Center for
Health Education

Cafeteria -
Basement
Bistro

Medical
Record
Management

